

# MONTHLY MEMBERSHIP PROGRESS REPORT

LOCATION CALIFORNIA

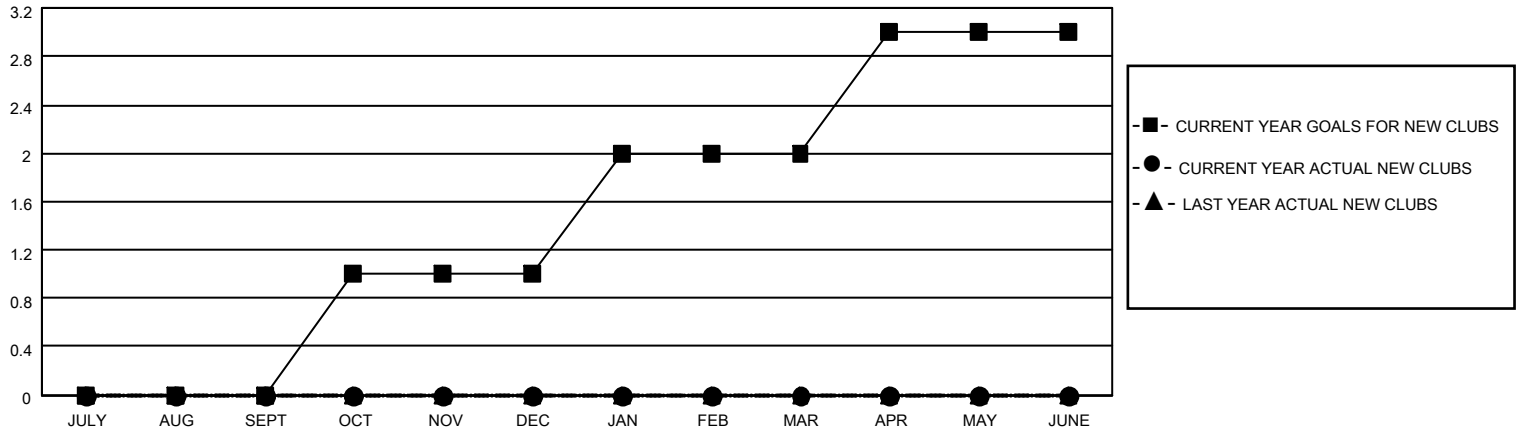
District 4 L3

Results as of: 2/28/2022

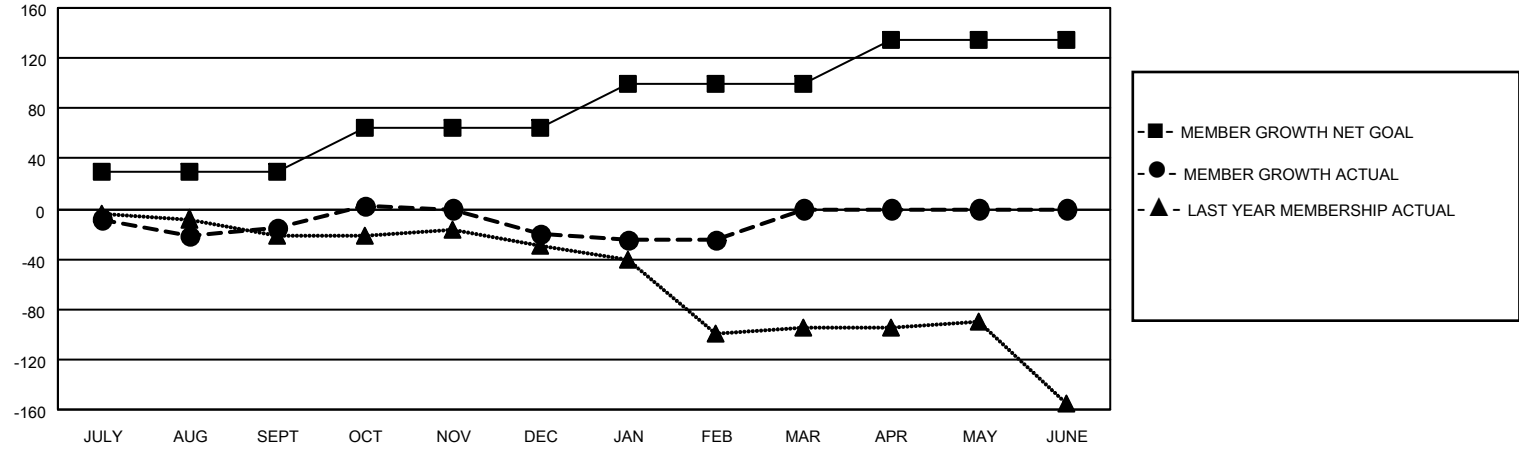
Clubs			
RESULTS FOR 2021-2022			
QUARTER	NEW CLUB GOAL	NEW CLUBS	DROPPED CLUBS
JULY/AUG/SEPT	0	0	1
OCT/NOV/DEC	1	0	5
JAN/FEB/MAR	1	0	1
APR/MAY/JUNE	1	0	0

Members			
RESULTS FOR 2021-2022			
QUARTER	MEMBER GROWTH NET GOAL	MEMBER GROWTH ACTUAL	DROPPED MEMBERS ACTUAL (including transfers)
JULY/AUG/SEPT	30	81	58
OCT/NOV/DEC	35	80	81
JAN/FEB/MAR	35	34	25
APR/MAY/JUNE	35	0	0

**GOALS AND ACTUAL NEW CLUBS CUMULATIVE**



**GOALS AND ACTUAL MEMBERS CUMULATIVE**



DROPPED CLUBS: 7	
<b>DROPPED MEMBERS</b>	
DECEASED	9
CLUB CANCELLED	62
OTHER	94
<b>TOTAL</b>	<b>165</b>

24 CLUBS OF 59 ADDED 1 OR MORE NEW MEMBERS

[CLICK HERE FOR CUMULATIVE MEMBERSHIP DATA](#)

<u>GENDER DISTRIBUTION</u>	
MALE	601 (53.52%)
FEMALE	521 (46.39%)
NON BINARY	0 (0.00%)
PREFER NOT TO ANSWER	1 (0.09%)
<b>TOTAL FAMILY UNIT MEMBERS</b>	<b>249</b>
<b>FAMILY MEMBERS PAYING HALF DUES</b>	<b>134</b>